

# Waterbury Youth Services ANNUAL REPORT 2019

Fiscal Year: July 2018-June 2019



# IMPACT

Since 1976, Waterbury Youth Services (WYS) has been at the forefront helping youth stay in school, strengthening families, and making our community safer.

Our 14,000–square foot campus in downtown Waterbury isn't just a youth service bureau. It's an afterschool learning laboratory where futures are reimagined through technology, woodworking, journalism, leadership forums, art, dance and martial arts.

To meet the vital and urgent needs of young people throughout Greater Waterbury, we also provide: runaway and homeless youth assistance, crisis counseling, LGBTQ+ support, transitional living support, short-term residential family intervention, juvenile justice/diversion programs, truancy prevention, mentoring, and youth employment programs. Waterbury Youth Services also runs one of the leading Child Advocacy Centers in Connecticut.

The result: bigger dreams and brighter futures for nearly 1000 young people in Greater Waterbury each year.





## OUR MISSION

Waterbury Youth Services is a non-profit organization  
Guiding youth to discover their unique talents and potential for success --One Life at a Time.



## 2018/19 AT A GLANCE

### Total Amount Raised

\$2,193,099

### Number of Youth Served

967

### Towns We Serve

Beacon Falls • Bethlehem • Cheshire  
Middlebury • Naugatuck • Prospect  
Southbury • Thomaston • Waterbury  
Watertown • Wolcott • Woodbury





## OUR PROGRAMS

### Positive Youth Development Team

- Linking Academics to Life
- Girls Who Code
- Summer Camp
- Career Builders in Health
- LGBTQ+ Support Group
- Youth Empowerment Team
- Community Housing Assistance Program/Community Housing Employment Enrichment Resources Program

### Juvenile Justice Team

- Juvenile Review Board
- Truancy Prevention Program
- Juvenile Justice Mentoring
- 4-H Mentoring

### Clinical Team

- Short Term Family Integrated Treatment
- Greater Waterbury Child Advocacy Center
- Youth & Family Emergency Services

### Partnerships

- Local Interagency Service Team
- Racial & Ethnic Disparities/Disproportionate Minority Contact





## **PROGRAM PHILOSOPHY**

At Waterbury Youth Services, we've transformed how young people experience learning and relationships with adults. The architecture for all our programs is the Positive Youth Development framework. This approach emphasizes building a young person's strengths and providing support and opportunities that help them achieve goals and transition to adulthood in a productive, healthy manner.



## PROGRAMS

**Girls Who Code:** Serves middle and high school females. Based on the nationally acclaimed Girls Who Code program, this after-school club is aimed at closing the gender gap in Information Technology (IT).

**Youth Employment:** Serves youth ages 14–21. Encourages the development of job skills, provides real-life work experience, and helps to build the resumes of our young people. A partnership with Northwest Regional Workforce Investment Board (NRWIB).

**Summer Youth Camp:** Serves children ages 4–13. Provides children the chance to develop life-long skills and friendships, build character, grow more independent, gain literacy skills, discover new interests, spend the day being physically active, and reconnect with nature in the structured and fun Kiwanis Camp facility in Wolcott, CT. Activities include arts and crafts, swimming, sports, hiking, bike riding, field trips and games. A partnership with Kiwanis Club of Waterbury and Waterbury Police Activity League.

**Community Housing Assistance Program (CHAP).** Serves youth ages 18–23 who are “aging out” of foster care. A partnership with CT Dept. of Children & Families that helps youth set goals, pursue higher education, find a career, develop life skills and establish independence.

**Linking Academics to Life (LAL):** A free college, career and life readiness after school program that helps high school students learn more about themselves, discover their potential and chart a successful life course. Four core areas: Senior Prep, Woodworking, Journalism, Entrepreneurship. Monthly stipends allow students—who may have to work otherwise—to focus 100% on academics.



## PROGRAMS

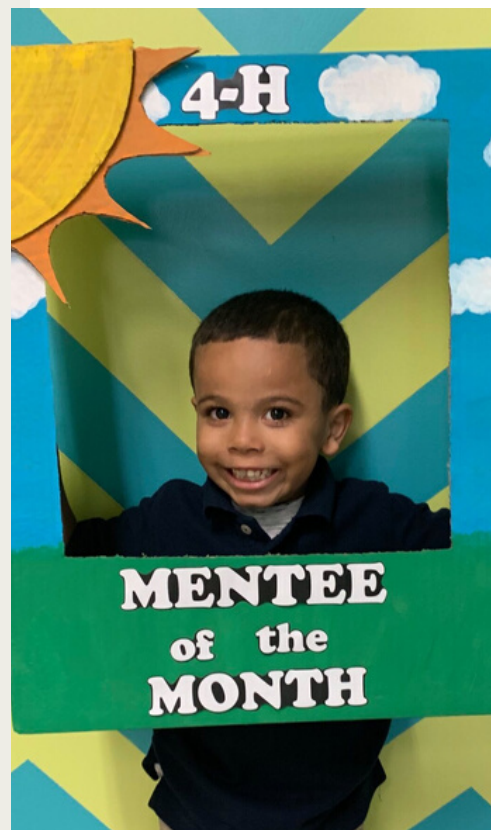
**Career Builders in Health:** Jump starts careers in health care for young people ages 18–24 by training, certifying and placing young adults into Certified Nursing Assistant (CNA) jobs, followed by support that helps participants pursue a post– secondary education.

**Truancy Prevention:** Goal is to reduce absences, which will encourage completion in school and furthering education. Includes home visitation, supportive counseling, referral, advocacy, parental involvement, and case management to assist youth in reaching their full potential.

**Juvenile Justice Mentoring:** Individualized mentoring program for Juvenile Justice involved youth. Model emphasizes connecting youth with a mentor within their naturally occurring support system.

**4–H Mentoring.** The CT 4–H Mentoring Project is a year long prevention program for youth ages 9–13 designed to assist them in acquiring knowledge, building character, and developing life skills in a fun learning environment. Program activities: dance, creative arts, and karate.

**Juvenile Review Board (JRB):** A community–based diversion process offered to youth who have committed misdemeanor crimes or youth who are displaying at–risk behaviors at home or school that could result in an arrest or a referral to the juvenile court.





## PROGRAMS

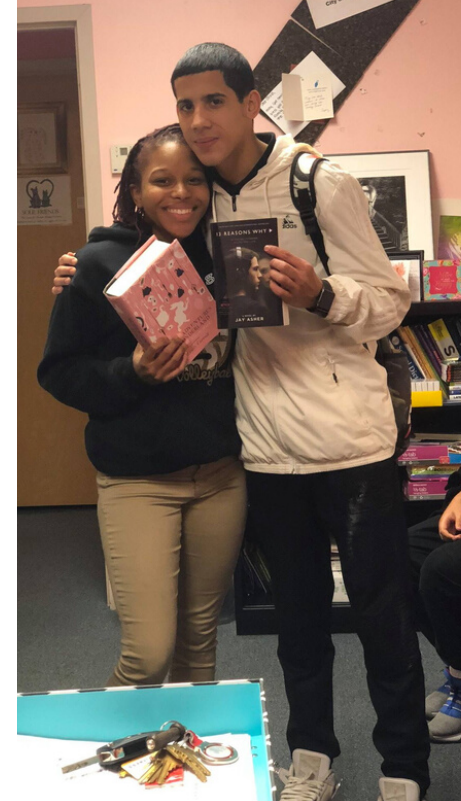
**Short Term Family Integrated Treatment (S-FIT):** A short-term (15 day) intensive family therapy treatment option providing crisis stabilization and assessment, with rapid reintegration and transition back home for youth ages 12–17. A partnership with the Connecticut Dept. of Children & Families.

**Youth & Family Emergency Services (YFES):** Provides crisis intervention for youth ages 6–24 and their families experiencing severe conflict or crisis warranting immediate intervention through: Homeless Youth Resource Center; Project Safe Place; Supervised Visitations; Crisis Counseling.

**Greater Waterbury Child Advocacy Center (CAC):** Works to investigate and prosecute cases where child sexual abuse or serious physical abuse is alleged or suspected. Coordinates efforts of all professionals involved in the investigation and prosecution process of child abuse. Services include forensic evaluations, medical examinations, counseling and supportive services.

**Local Interagency Service Team Meeting (LIST):** A quarterly, community-wide meeting facilitated monthly by WYS that provides information and training about juvenile justice issues in the Greater Waterbury area.

**Racial & Ethnic Disparities/Disproportionate Minority Contact (RED).** A community-wide meeting hosted by WYS that analyzes data on the demographics of youth involved with the juvenile justice system and with school disciplinary practices. The team monitors the disproportionate effects of local systemic practices on youth of color and looks for ways to decrease the effects on youth in our community.





## **OUR BOARD & STAFF**



## BOARD OF DIRECTORS

Jack Betkoski, III

Justin Golden

Diane Haggis, PhD

Mark Lancor

Janice Paul

Kelly Pinho

Ryan Russell

Maria Scozzafava Milo

Melissa Scozzafava

Beth Sieling, MD

### Executive Board:

Diane Haggis, VP

Justin Golden, Treasurer

Mark Lancor, President

Janice Paul, Secretary

### Executive Director:

Kathi M. Crowe





## OUR STAFF

Our team is comprised of 25 full time and 30 part time amazing, generous, hard-working staff members who are passionate about helping young people in Greater Waterbury succeed.

This diverse group of professionals draws upon expertise from a variety of backgrounds to support and create opportunities for our youth, including Licensed Clinical Social Workers, Bachelors and Masters Level Social Workers, Business & Finance, and degrees in Criminal Justice and Licensed Marriage & Family therapists.





## EVENT HIGHLIGHTS

Waterbury Youth Services is the oldest and largest Youth Service Bureau in Connecticut. Our organization started in 1976 when Governor Ella Grasso allocated funds to Connecticut towns to begin community based youth service initiatives. In May, 2019, the Connecticut General Assembly recognized Waterbury Youth Services for its 43 years of service to youth and families in the Greater Waterbury Area. The Citation was introduced by Rep. Larry Butler, Rep. Stephanie Cummings, Sen. Robert Sampson, Rep. Anthony D'Amelio, Rep. Ronald Napoli, and Senator Joan Hartley. The Citation reads:

"For decades, your organization has been an integral part of our City's Mission to help young people stay in school and on a positive path. Your dedicated work has resulted in stronger families and communities. Through coaching, mentoring, and lending a helping hand to youth in need, you continue to make our City and its future brighter. Thank you for all that you do for Waterbury and we wish you continued success for the future. "

At Waterbury Youth Services' 2018 Spring Grill & Chill event, Executive Director Kathi M. Crowe awarded Senator Joan Hartley "Advocate of the Year" award for her continual, unwavering and influential dedication to youth in the Greater Waterbury area.





## EVENT HIGHLIGHTS

The Greater Waterbury Child Advocacy Center (CAC) brought statewide attention to child abuse prevention on April 10, 2019 by planting a pinwheel garden at Waterbury Youth Services. The pinwheel is a national symbol of childhood. The CAC team planted 100 pinwheels to honor the 100 victims of child abuse they help each year.

The CAC team protects children in the Greater Waterbury area by responding to allegations of child sexual abuse, child physical abuse and serious neglect, as well as domestic minor sex trafficking through forensic interviews and accompanying medical exams. The CAC draws its strength from the combined knowledge of multiple disciplines brought by team members working co-operatively.

Partners include: the states attorney's office (both Adult and Juvenile), the Dept. of Children and Families, local police departments and State Troop A, trained medical personnel, mental health professionals, victim advocates from Safe Haven of Greater Waterbury and court-appointed by the Office of Victim Services, the Office of Juvenile and Adult Probation and Love 146.





## EVENT HIGHLIGHTS

WYS hosted its 16th Annual Excellence in Youth Awards last May. Sponsored by the American Savings Foundation, the Excellence in Youth Awards honors middle and high school students who have shown exemplary character in Leadership, Community Service, Citizenship and Initiative.

**Back To School Rally.** More than 2,000 people attended this free, city-wide event hosted by WYS, The Mayor's Office & Waterbury Public Schools. Special thanks to Connecticut Community Foundation for their support, to our partners that donated school supplies--including Waterbury Hospital and MacDermid--and our 50 community vendors.

**Grill & Chill:** More than 100 attendees joined our 43rd birthday celebration at the Country Club in Waterbury last May. Special thanks to our sponsors: TD Bank, Mr. & Mrs. William Neil, Jr., Comcast NBCUniversal, DyMar, ION Bank, Advanced Benefit Strategies, Golden Technology Services, Albert Brothers, Saint Mary's Hospital, Webster Bank, Haynes, LF Powers, The DiSalvo Engineering Group, and the Harold Leever Regional Cancer Ctr.

**Santa's Workshop & Toy Drive:** We are grateful to the 75+ people who joined us at the 34th Annual Santa's Workshop & Toy Drive. You brought so many great toys for children and young people in Waterbury. Thank you for your compassion, kindness and love. Special thanks to our Sponsors: Bannon & Hebert Better Homes & Gardens, Prime One Eleven, DyMar, Zackin Zimyeski Sullivan, Sable ARC, Leominster Family Dentists, Advanced Benefit Strategies.







## FINANCIALS

Thanks to the hard work and generosity of so many, 2018/19 was a very impactful year.  
We were able to change more lives than ever before.

## FINANCIALS

### Breakdown of Funds by Program Teams

2018–2019 was a very impactful year. We served 967 youth and twelve towns and cities, while launching "Girls Who Code," a vital new STEM program.

\$602,955 Positive Youth Development Team

\$1,304,289: Clinical Team

\$285,855: Juvenile Justice Team

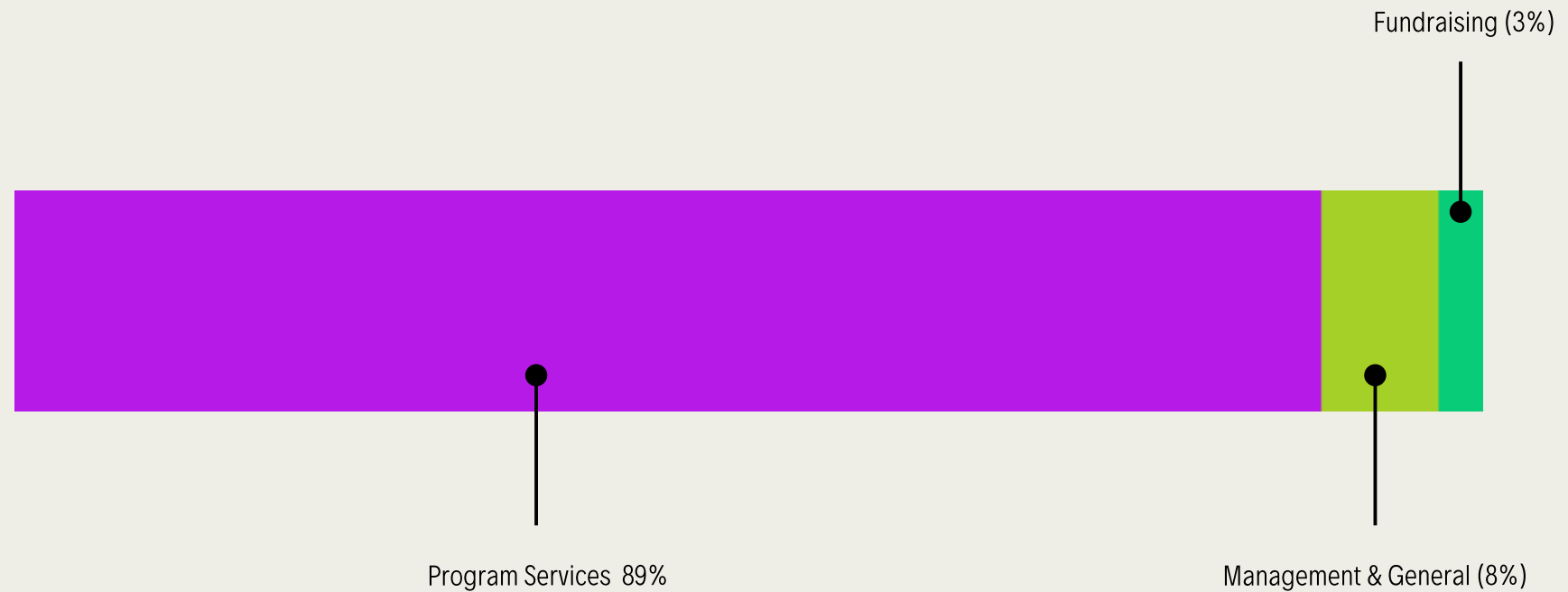
\$2,193,099: Total





## FINANCIALS

### Allocation of Expenses

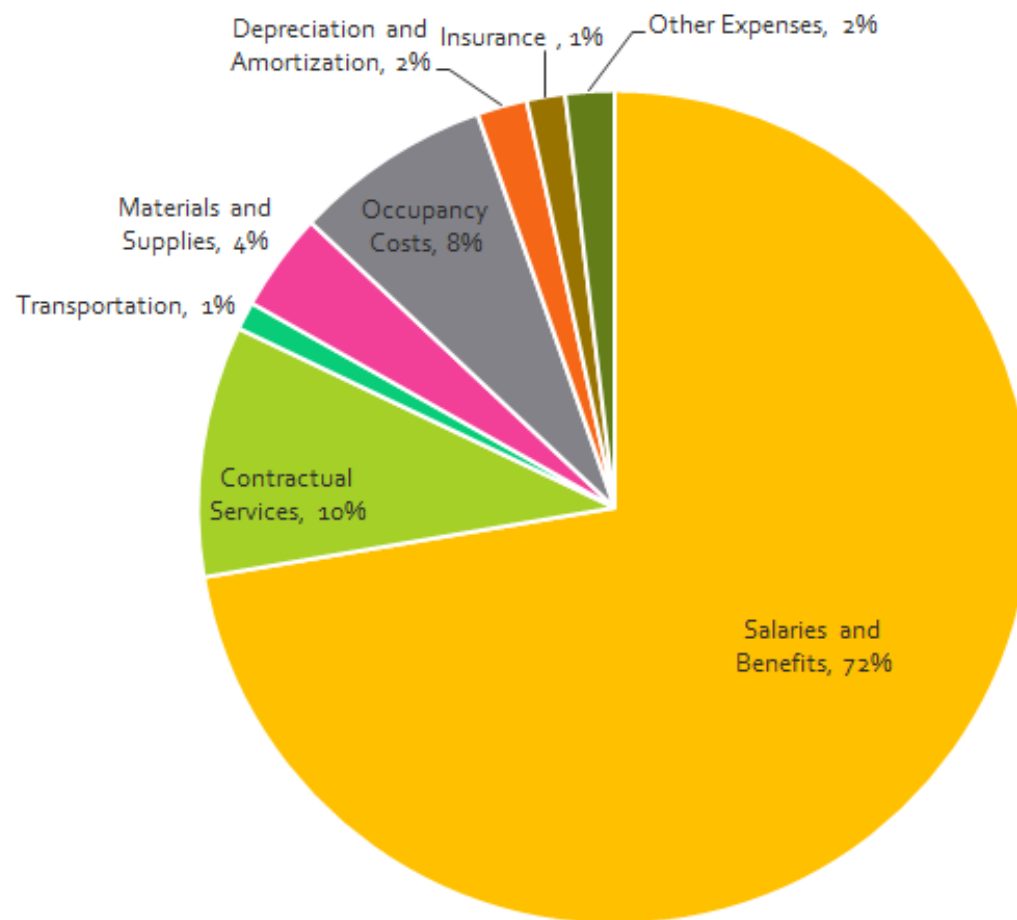


[Link to Financial Statement](#)

[Link to 990](#)

## FINANCIALS

Our operational costs are largely funded by the Connecticut Department of Children & Families Program Contracts, grants from private foundations and the support of businesses and individuals who make it possible for us to keep our promise to use these funds to enhance the lives of children and youth in Greater Waterbury.





# DONORS

We are deeply grateful to the following donors who entrusted us with their gifts in FY 2018/19 to help build a stronger Greater Waterbury community.

## TOP FUNDERS

AMERICAN SAVINGS FOUNDATION  
CONNECTICUT HEALTH & EDUCATION  
FACILITIES AUTHORITY  
CITY OF WATERBURY  
CONNECTICUT CHILDREN'S ALLIANCE  
CONNECTICUT COMMUNITY FOUNDATION  
CONNECTICUT DEVELOPMENT BLOCK  
GRANT  
CONNECTICUT JUDICIAL BRANCH  
CONNECTICUT YOUTH SERVICE  
ASSOCIATION  
DEPARTMENT OF CHILDREN AND FAMILIES  
DEPARTMENT OF EDUCATION  
GOVERNOR'S PREVENTION PARTNERSHIP  
JEWISH FEDERATION OF WESTERN CT  
LOCAL INTERAGENCY SERVICE TEAM  
MACDERMID PERFORMANCE SOLUTIONS  
MICHAEL & KRISTIN GORALSKI  
NORTHWEST REGIONAL WORKFORCE  
INVESTMENT BOARD  
TD BANK  
TOW FOUNDATION  
TOWN OF PROSPECT  
UConn 4-H  
UNITED WAY OF GREATER WATERBURY  
WORKERS' COMPENSATION TRUST

## 1,001–5,000

ANN MARINO  
BANNON & HEBERT  
GEORGE & GRACE LONG FOUNDATION  
ION BANK FOUNDATION  
JOYCE P. LYONS CHARITABLE FOUNDATION  
KATHI CROWE  
LEONARD MECCA  
LIBERTY BANK FOUNDATION  
MACY'S  
MELVILLE CHARITABLE TRUST, INC  
PAUL & CHRISTINE COREY  
PEOPLE'S UNITED BANK COMMUNITY FDN.  
RITE AID FOUNDATION KIDCENTS  
SACRED HEART MUSTARD SEED FUND  
SAVINGS BANK OF DANBURY  
TODD STEPHENSON  
THE WATERBURY EXCHANGE CLUB  
CHARITABLE FOUNDATION  
THOMASTON SAVINGS BANK  
WEBSTER BANK

## 1,000–501

DYMAR  
MARIANNE MALANAPHY  
MARY VEILLETTE  
STEPHEN NORRIS  
TRICIA HARRITY  
ELAINE MCCABE  
ZACKIN ZIMYESKI SULLIVAN  
WILLIAM NEIL

## 500–101

ADVANCE BENEFIT STRATEGIES  
ALBERT BROTHERS  
AMERICA'S CHARITIES  
AMY PAVLIK  
ANNA ASCIONE  
BARBARA BROWN  
BETH SIELING, MD  
CATERINA PERUGINI  
COMCAST CORP.  
DIANE HAGGIS  
DONALD CAPPOZZI  
ELIZABETH MASTRIANNA  
GERALDINE REARDON

# DONORS

## 500-101

GOLDEN TECHNOLOGY SERVICE INC  
GRADY & RILEY LLP  
GREEN CONSTRUCTION  
HAYES GROUP INC  
HOWARD MARKOWITZ  
JACK BETKOSKI, III  
JAMES & RENE DICICO  
JAMES ORSILLO  
JANET TRUJILLO  
JANICE PAUL  
JAY & HELGA MOODY  
SENATOR JOAN HARTLEY  
JODY GUERRERA  
JOHN MCFARLAND  
JOSEPH GALLO  
JPC LAWN CARE  
JUDITH PERRIN  
JUSTIN GOLDEN  
KATHLEEN LANGDO  
KEITH SULLIVAN  
LEE SCHLESINGER  
L.F. POWERS CO  
LYNN WARD  
MARITZA PARRU  
MICHAEL KARNASIEWICZ  
MONICA ROBERTO  
RALPH MONTI  
RANDEE HICKEY

## 500-101

RONALD WISLICKI  
SABLE ARC  
STEADFAST STAFFING SOLUTIONS  
STEVEN BURROWS  
THE DI SALVO ENGINEERING GROUP  
THE HAROLD LEEVER REGIONAL CANCER CTR.  
TOWN OF WOODBURY YOUTH GROUP  
TRINITY HEALTH OF NEW ENGLAND  
TRUIST  
UNITED WAY OF MASSACHUSETTS  
WILLIAM GUERRERA  
YAMIN & GRANT LLC

## <=100

AMELIA MALANAPHY  
ANTHONY PORTE  
ARMAND DACCACHE  
ARTHUR BOGEN  
BILL DWYER  
BOB WALKER  
BUCHSBAUM  
CAROL SALVATORE  
CAROLE MOSCHELLA  
CHAD LANDMON  
CHAMPION ENGINEERING  
CHERYL DANSBY  
CHRIS PELOSI  
COLLEEN PENNY  
COMMUNICATION CONCEPTS  
DANIEL AGUILAR  
DAVID COX  
DAWN CRANDALL  
DENIS O'SULLIVAN P.E.,LLC  
DIANE TEIXEIRA  
DOMENIC JANNETTY  
DONALD THOMPSON  
DOUGLAS KENYON  
EBENEFITS GROUP



## DONORS

<=100

EDGERTON INC  
GABRIELA CRESPO  
GARRET POST  
GARY SPIEGEL  
GEORGE ABRAHAM  
GERALD SALVATORE  
HEIDI DUCKETT  
HUGH SULLIVAN  
IRINA CHERHONIAK  
JACI CARROLL STAFFING SERVICES, INC  
JAMES SHEA  
JANET WALKER  
JENNIFER NAYLOR  
JERRY GARDINO  
JILL SLOANE  
JILLIAN RICHMOND  
JIM AMES  
JODI CARLSON  
JOHN GAVALLAS  
JOSEPH PLOURDE  
JULES CALABRO  
JULIA LECLAIR  
KAREN MELLO  
KATHLEEN BROPHY  
KELLY GARRAY  
LAURA CUMMINGS  
LINDA LIOTUS  
LISA HERSEY

<=100

LOURDES UZHCA  
LUCHS CONSULTING ENGINEERS, LLC  
LUCIENNE MARSELLA  
LUTHER HARRIS  
MARGARET JASIULEVICIUS  
MARGARET MAJESKI  
MARIA MILO  
MARJORIE PENZETTA  
MARK BERARDI  
MARK COOPER  
MARK GREEN  
MELISSA SCOZZAFAVA  
MICHAEL MARTONE  
MIDDLEBURY CONVALESCENT HOME, INC  
MIKE REILLY  
MOIRA CLEARLY-DWYER  
MONIQUE DOLPHY  
OLIVIA DUDLEY  
O'ROURKE & BIRCH, INC  
PATRICIA HARMAN  
PHILIP WILLIS  
R.J. LAUX  
RAYMOND DEMERS  
RAYMOND MACKLOSKEY

<=100

RAYMOND WORK  
ROBERT BELMONT  
ROBERT BYRNE  
ROBERT FLUHARTY  
ROSEMARY FOX  
RYAN RUSSELL  
SECURITY FIRST INSURANCE GROUP  
SELIMN NOUJAIM  
SERGELYNE SIMEON  
SHANIQUE GRAVELY  
SHARON BCKWITH  
STACEY RUBINFELD  
STOLL'S PHARMACY, INC  
SUSAN MEEK  
TARA SHEA  
TIESHIA BEAMON  
TIM CONLAN CO.  
TRACY RADDEN  
UNITED WAY OF NAUGATUCK /BEACON FALLS  
VINCENT BERTULI  
WATERBURY REGIONAL CHAMBER







